

Rāpaki Living

56 WALTHAM ROAD

cowdy



**Perfectly positioned
between Christchurch
city centre and the
magnificent Port Hills,
these elegantly
designed contemporary
townhouses are a cut
above the rest.**

From location to design, building materials and finish — the team are building something they would be proud to live in themselves. Built from quality materials with a 10 year Master Builders Guarantee, your investment is well protected.

- 3 Double bedrooms
- 2 Tiled bathrooms
- Intelligent use of space allows for effortless flow between the kitchen, living, dining areas.
- Private courtyard provides a space to enjoy those warm summer nights.
- Master benefits from a tiled ensuite
- Tiled family bathroom with bath
- Internal access garage
- Laundry tucked away down stairs
- Fisher and Paykel appliances
- Stone benchtop
- Rental appraisal suggests an approximate 5% return
- Freehold titles
- First home buyers may be able to use their KiwiSaver and HomeStart Grant

Located just minutes from the CBD and equally as close to the port hills we have on offer — Rāpaki Living. Within a short stroll towards the port hills you will find the beautiful Waltham Park and Swimming Pool, and for your convenience St Martins shopping centre with a host of amenities nearby. Head north and within minutes you will be in the city centre and all it has on offer. These brand new, architecturally designed townhouses, soon to be under construction are scheduled to be completed by November 2021.

Don't hesitate to get in touch, we don't anticipate these lasting long.

Rāpaki Living

cowdy



Rāpaki Living

EXTERIOR

ARTIST'S IMPRESSION

cowdy



Rāpaki Living

EXTERIOR

ARTIST'S IMPRESSION

cowdy



Rāpaki Living

LIVING SPACE

ARTIST'S IMPRESSION

cowdy



Rāpaki Living

KITCHEN

ARTIST'S IMPRESSION

cowdy



Rāpaki Living

BATHROOM

ARTIST'S IMPRESSION

cowdy



Waltham Road

Units 1-5

Ground Floor Area: 68.19 m²
OVER FRAME

First Floor Area: 53.51 m²

Total Floor Area: 121.70 m²

Units 6-10

Ground Floor Area: 68.09 m²
OVER FRAME

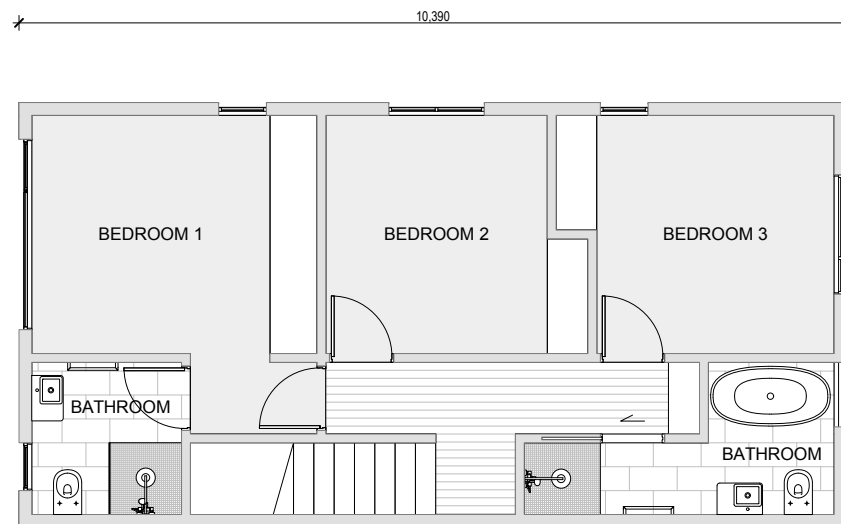
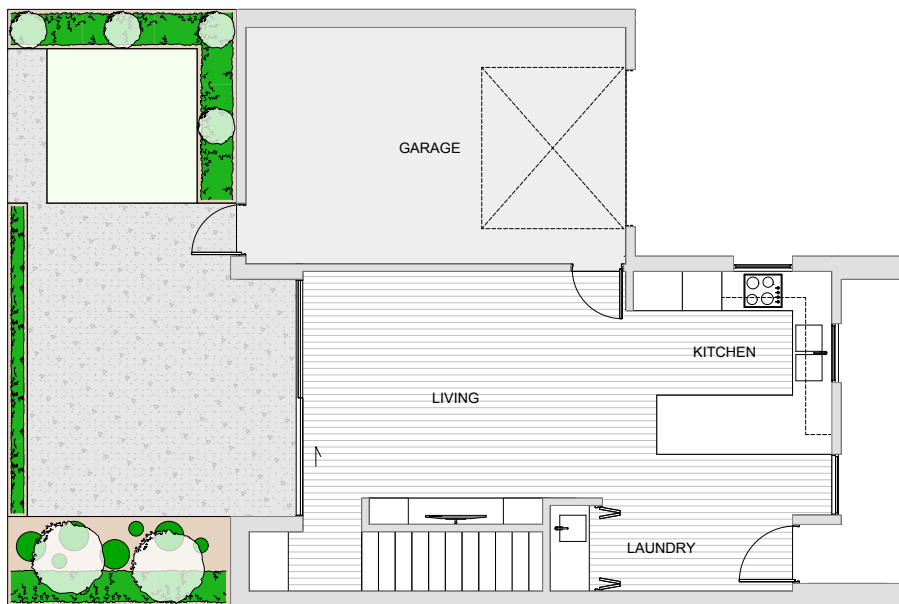
First Floor Area: 53.51 m²

Total Floor Area: 121.60 m²

Rāpaki Living

SITE PLAN

cowdy



Rāpaki Living

FLOOR PLAN

cowdy



Cladding No.1

Supplier: Abodo
Product: Vulcan Cladding
Finish: Straw

Abodo Vulcan Cladding is our premium weatherboard timber. Abodo crafts timbers with lasting beauty that are safe for people and the environment. Many exterior timbers are harvested from unsustainable old growth forests or are treated with harmful chemicals. Abodo timbers stand the test of time, they are beautiful, durable and rapidly renewable. Formed in 2001 by the Gudsell family, Abodo remains a New Zealand-owned, family business with a purpose.

<https://www.abodo.co.nz/products/timber/vulcan-cladding>



Cladding No.2

Supplier: Firth
Product: Masonry Brick 10 series
Finish: Charcoal

The benefits of masonry are aesthetics, low maintenance, strength and durability, thermal efficiency, noise reduction and fire and earthquake resistance. Masonry products are made in New Zealand with locally sourced natural materials.

<https://www.firth.co.nz/residential/masonry/>



Cladding No.3

Supplier: BGC
Product: Stratum 300mm wide plank
Finish: Smooth Flaxpod

Stratum is a vibrant and modern alternative to weatherboard cladding. The wide planks/panels offer a striking appearance that suits any contemporary home. The product is fast and easy to install and come factory sealed and primed for NZ weather conditions.

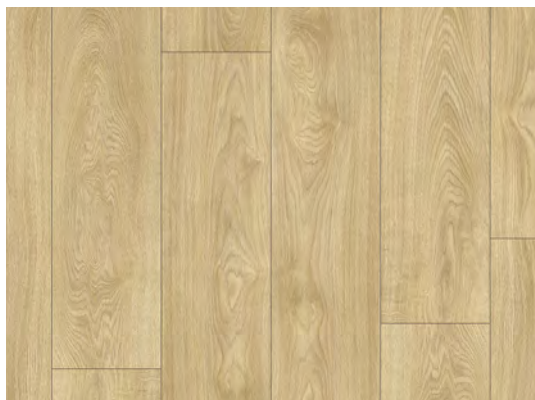
<http://www.bgcinnovadesign.co.nz/stratum>

Rāpaki Living

EXTERIOR CLADDING

OR SIMILAR

cowdy

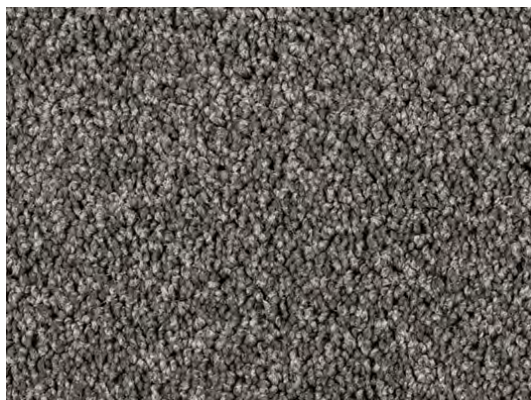


Floor Finish No.1 (Ground)

Supplier: Moduleo
Product: Impress Vinyl
Finish: Dotterel

Moduleo sets the standard for future generations of luxury vinyl floors. Sustainable production delivers easy-to-maintain and easy-to-install flooring solutions that stand out thanks to unique designs, comfort and strong performance.

<https://www.moduleo.com/en-gb/about-moduleo/who-we-are>



Floor Finish No.2 (Upstairs)

Supplier: Godfrey Hirst
Product: Pleasant Point Carpet
Finish: Cockle

Godfrey Hirst Carpets lead the market in colour, style, performance and quality.

<https://www.godfreyhirst.com/nz/carpet/product/pleasant-point-nz?carpet=cockle&room=>



Floor Finish No.3 (Bathrooms)

Supplier: Tile Warehouse
Product: Athens Tiles 600x600
Finish: Dark Grey Tile

A striking and luxurious soft stone-look in matt finish.

<https://www.tilewarehouse.co.nz/tile-ranges/athens/>

Rāpaki Living

FLOORING

OR SIMILAR

cowdy



Bath — Levivi Veneto 1675MM

<https://www.plumbingworld.co.nz/Product/LEVVEN1675/Levivi-Veneto-1675mm-Bath>



Bathroom Vanity — Levivi Marbella 800mm Wall-Hung Vanity

<https://www.plumbingworld.co.nz/Product/LEVMAR800WH/Levivi-Marbella-800mm-Wall-Hung-Vanity>



Shower Head — Paini Slide Shower

<https://www.plumbingworld.co.nz/Product/P2/Paini-P2-Slide-Shower>



Shower Mixer — Paini Ventus Shower Mixer

<https://www.plumbingworld.co.nz/Product/93CR690/Paini-Ventus-Shower-Mixer>



Towel Warmer — Levivi 7 Bar 825mm Square Heated Towel Warmer

<https://www.plumbingworld.co.nz/Product/LEVWHAS825S/Levivi-Slimline-7-Bar-825mm-Square-Heated-Towel-Warmer>



Toilet — Levivi Marbella Back-To-Wall Toilet Suite

<https://www.plumbingworld.co.nz/Product/LEVMBRTW/Levivi-Marbella-Back-To-Wall-Toilet-Suite>

Rāpaki Living

BATHROOM FIXTURES

OR SIMILAR

cowdy



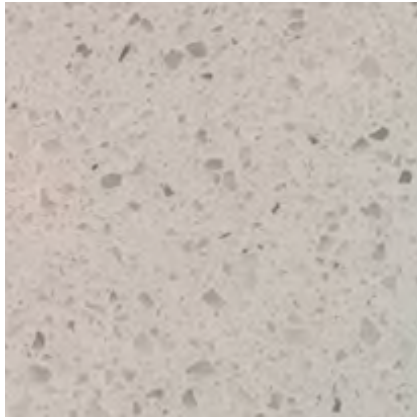
Kitchen Sink — Burns & Ferrall
Designer Range 400mm R15
Single Bowl

<https://www.plumbingworld.co.nz/Product/BFD440R15/Burns-And-Ferrall-Designer-Range-400mm-R15-Single-Bowl>



Kitchen Sink Mixer — LeVivi Aspen
Gooseneck Sink Mixer with Flexi-hose

<https://www.plumbingworld.co.nz/Product/LEVPF7505SS/LeVivi-Aspen-Gooseneck-Sink-Mixer-with-Flexi-hose>



Kitchen Benchtop — Marbello
Quartz — Nougat

https://marbello.com/component/jux_portfolio_pro/item/14-nougat



Splashback — Picadilly Nero
Matt 600x600

<https://www.tilewarehouse.co.nz/tile-ranges/picadilly/picadilly-nero-matt-600x600/?fbclid=IwAR3ZzslcHMwMKzWp2PI1RHCbH3L3lOwzZH7bTJuhxcaCK0bexDlrDLYrSPs>



Oven — Fisher & Paykel 60cm
Built-In — OB60SC5CEX2

<https://www.fisherpaykel.com/nz/cooking/ovens/contemporary-ovens/oven-60cm-5-function-ob60sc5cex2-81748.html>

Rāpaki Living

KITCHEN FIXTURES

OR SIMILAR

cowdy



Cooktop — Fisher & Paykel
60cm Induction — CI604CTB1

<https://www.fisherpaykel.com/nz/cooking/cooktops/contemporary-cooktops/induction-cooktop-60cm-4-zones-ci604ctb1-81372.html>



Dishwasher — Brand: Fisher & Paykel
Freestanding DW60FC2X1

<https://www.fisherpaykel.com/nz/dishwashing/contemporary-dishwashers/freestanding-dishwasher-dw60fc2x1-81634.html>



Range hood — Fisher & Paykel
60cm Power pack — HP60ICSX3

<https://www.fisherpaykel.com/au/ventilation/integrated-ventilation/integrated-insert-rangehood-60cm-hp60icsx3-50133.html>



Heat pump — Mitsubishi Electric
High Wall Heat Pump R32 GL42

<https://www.mitsubishi-electric.co.nz/heatpump/l/65002B/r32-gl42-high-wall-heat-pump>

Rāpaki Living

KITCHEN/LIVING FIXTURES

OR SIMILAR

cowdy



Resene Sea Fog

To all walls - laundry, kitchen, laundry, living, stairwell, bed- rooms, WC & Store rooms.

<https://www.resene.co.nz/swatches/preview.php?chart=Resene%20The%20Range%20whites%20%26%20neutrals%20%282014%29&brand=Resene&name=Sea%20Fog>



Resene Double Alabaster

To all Ceilings, doors, architraves, bathroom & ensuite walls (if not tiled), and all wardrobe doors.

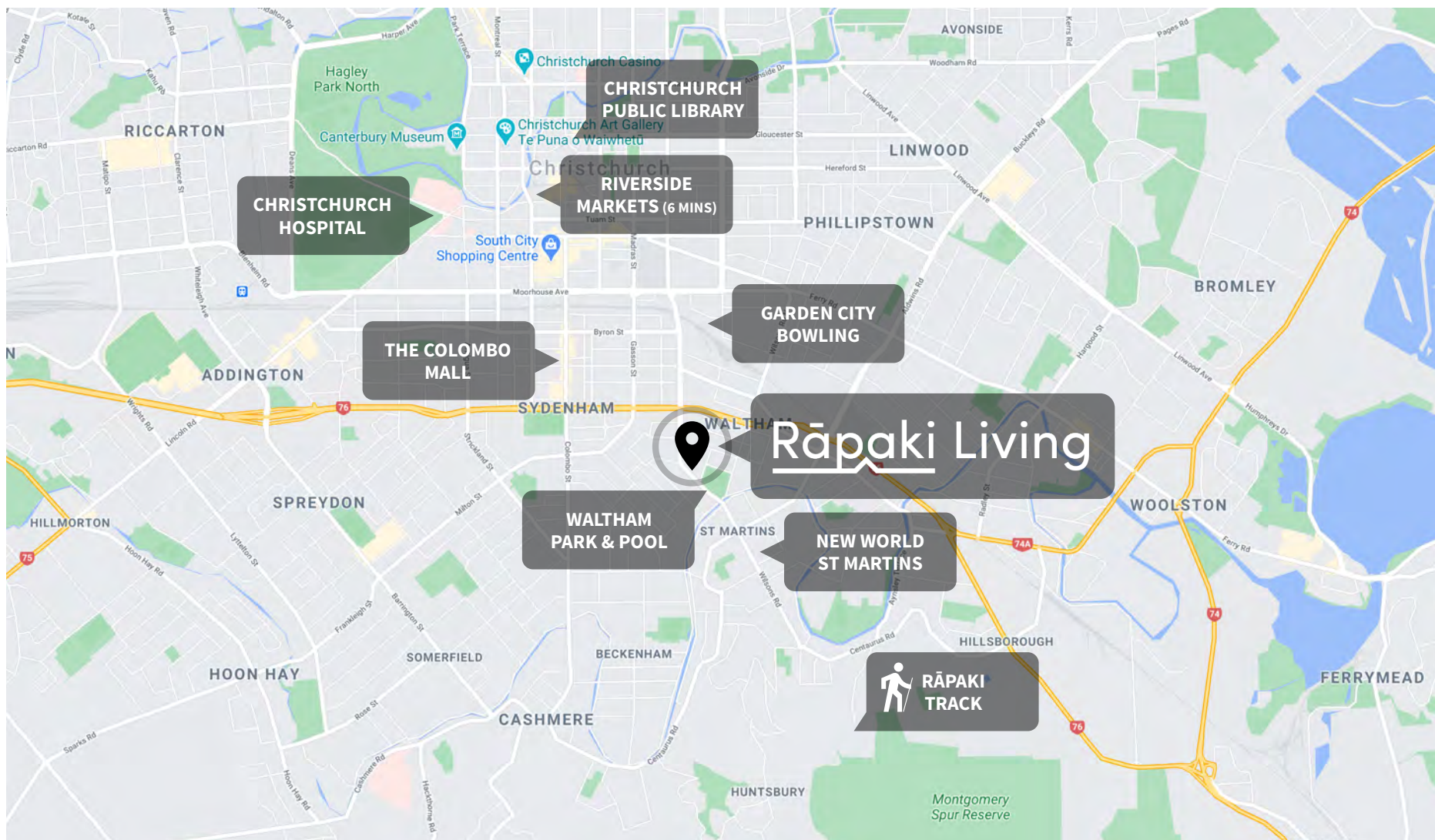
<https://www.resene.co.nz/swatches/preview.php?chart=Resene%20The%20Range%20whites%20%26%20neutrals%20%282010%29&brand=Resene&name=Double%20Alabaster>

Rāpaki Living

GENERAL WALL FINISHES

OR SIMILAR

cowdy



Rāpaki Living

cowdy



Jacob Wieblitz

Residential Sales Consultant

027 239 7176

03 355 6555

jwieblitz@cowdy.co.nz



Tom Rennie

Residential Sales Consultant

021 0838 3232

03 355 6555

trennie@cowdy.co.nz

Rāpaki Living

cowdy